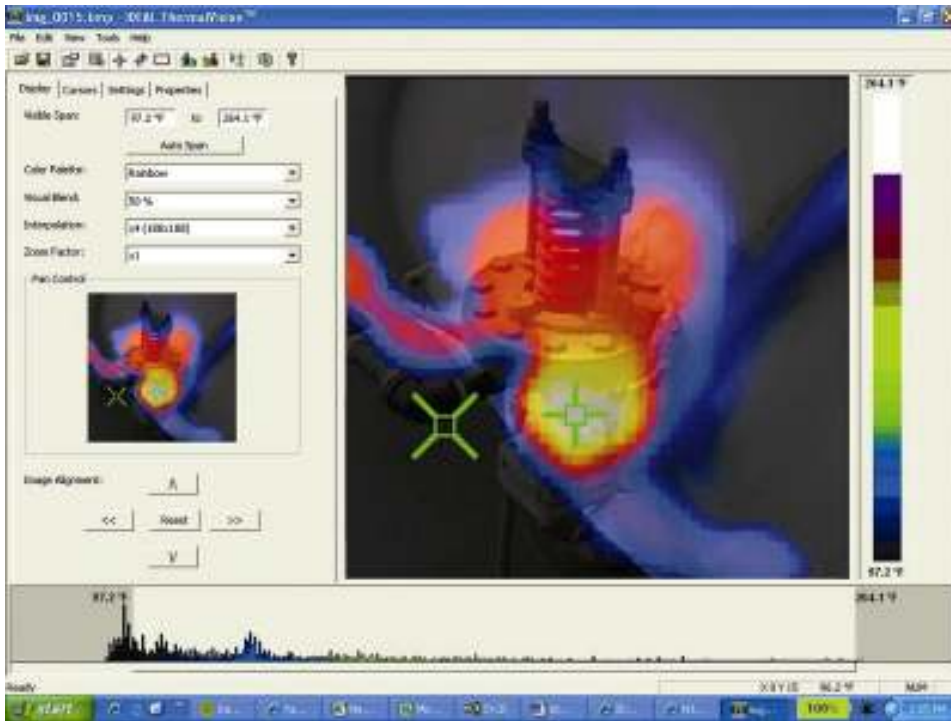


# ThermalVision™ Software Instruction Manual





## Contents


|  |    |
|--|----|
| 1. Installing the ThermalVision™ software onto a PC. ....    | 3  |
| 2. Transferring saved images from the camera to the PC. .... | 3  |
| 2.1. Direct from Camera .....                                | 3  |
| 2.2. From the Micro SD Card .....                            | 4  |
| 3. Using the ThermalVision™ software. ....                   | 5  |
| 3.1. Starting the Software. ....                             | 5  |
| 3.2. Opening an image. ....                                  | 5  |
| 3.3. Analysis Tools .....                                    | 7  |
| 3.4. Menus and Toolbars .....                                | 13 |
| 4. Report Writer.....  | 19 |
| 4.1. Title Page tab.....                                     | 19 |
| 4.2. Image Select tab. ....                                  | 20 |
| 4.3. Inspection Data tab. ....                               | 22 |

## 1. Installing the ThermalVision™ software onto a PC.

To install the ThermalVision™ software onto a PC:

1. Insert the CD into the PC.
2. Use Windows Explorer to view the files on the CD.
3. Open and run the file "ThermalVision™ PC setup.exe"
4. This will install the software on to the PC



Once the software has successfully been loaded an  icon appears on the PC Desktop.

## 2. Transferring saved images from the camera to the PC.

In the camera, the images are saved on a Micro-SD card and are in folders. A new folder is created every time the camera is switched on. The folder also contains the voice message file if it is recorded. Each saved image will therefore consist of two or three files.

- a. A BMP file containing the thermal and visual image.
- b. An IR2 file containing the temperature data.
- c. A WMV file if a voice recording was made when the image was saved.

**Note: Do not use the Microsoft Scanner and Camera Wizard to download images. Use Windows Explorer. Only Windows Explorer recognizes and copies all related files to your computer and keeps them organized.**

There are two ways to transfer images to the PC.

### 2.1. Direct from Camera

- a) Connect the camera to the PC via the USB cable.
- b) Use Windows Explorer and filing system to locate the micro SD card in the camera. This will normally be shown as a removable disk.
- c) Copy the complete folders from the SD card onto the PC. Note that there are at least two files for each image, which must be kept together.



## 2.2. From the Micro SD Card

- a) Take the Micro-SD card out of the camera and insert into a suitable card reader.
- b) Connect the card reader to the PC
- c) Use Windows Explorer to locate the files with the images on the Micro-SD card and copy the complete folders on to the PC. Note that there are at least two files for each image, which must be kept together.
- d) The folder is not necessary to include as an attachment on an email document. Both images are necessary, and ThermalVision™ software will automatically match the two images as long as they are both included as attachments.


### 3. Using the ThermalVision software.

The ThermalVision™ PC software has two main parts.

1. Analysis Software – Allows the user to analyse the image and also alter the settings for how the image is displayed.
2. Report Writer - Allows the user to create a report of the thermal images for records and administration and operational use.

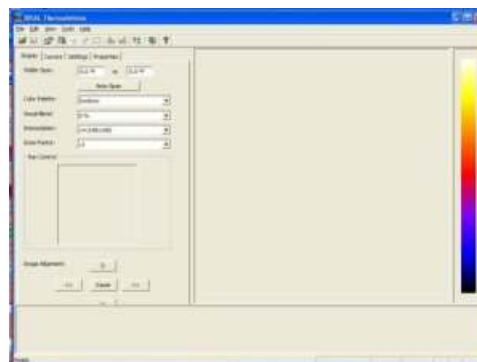
#### 3.1. Starting the Software.



Double Click on the ThermalVision™ icon to start the software .

The following window will appear.

*Note maximise the window to see all functions and buttons.*



#### 3.2. Opening an image.

Click on the drop down File menu and click on "Open".



Use the Windows Explorer, browse to the location of the folder where the images are saved. If viewing images directly from the camera this will be shown as a removable disk.



Once the folder is located, double click on the image to be loaded.



**Opening Screen shot.**

The window format shown below should be displayed. Maximise the window in order to see all the features.

Tool bars

Temp. Span: 26.3 °C to 57.6 °C

Colour Palette: Ironbow

Visible Blend: 25%

Interpolation: x4 (10b:338)

Zoom Factor: x3

Image Alignment

Cursor 1

Temperature scale for the image

Image.

Level and Span Adjustment bar

Visible and thermal image alignment.

26.1 °C 57.6 °C

Ready

Detailed description: This is a screenshot of a thermal imaging software interface. The main window displays a thermal image of a person's head and shoulders, overlaid on a visible camera image. The thermal image uses a color scale from blue (cooler) to red and yellow (warmer). A cursor labeled 'Cursor 1' is positioned on the thermal image. On the left side, there are several control panels. The top panel shows 'Temp. Span' set from 26.3 °C to 57.6 °C, with an 'Auto Span' button. Below that is a 'Colour Palette' dropdown set to 'Ironbow'. Further down are 'Visible Blend' (25%), 'Interpolation' (x4), and 'Zoom Factor' (x3). A 'Plan Control' section contains a small thumbnail of the thermal image and 'Image Alignment' buttons. At the bottom left, there is a 'Level and Span Adjustment bar' with a histogram and temperature markers at 26.1 °C and 57.6 °C. On the right side, a vertical color scale legend is shown, ranging from 26.1 °C at the bottom to 57.6 °C at the top. The interface includes a menu bar (File, Edit, View, Tools, Help) and a toolbar with various icons. Green lines and text labels point to these specific features.

### Image Description

The thermal image is seen on the right hand side of the screen. A temperature scale relating to the Colour Pallet is displayed to the right of the image. An adjustable span, also showing a histogram of temperatures in the image is shown at the bottom of the screen. There is a drop down menu bar and an icon toolbar. A set of Tabs is on the left hand side of the image. On start up, the display tab is shown.

### 3.3. Analysis Tools

To analyse an image and change its presentation, the tools available are: -

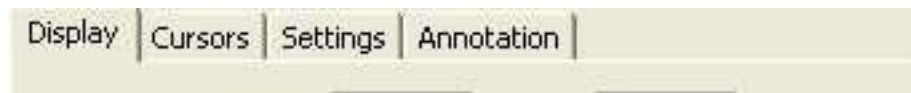
1. Drop down menus



2. Icon Toolbar

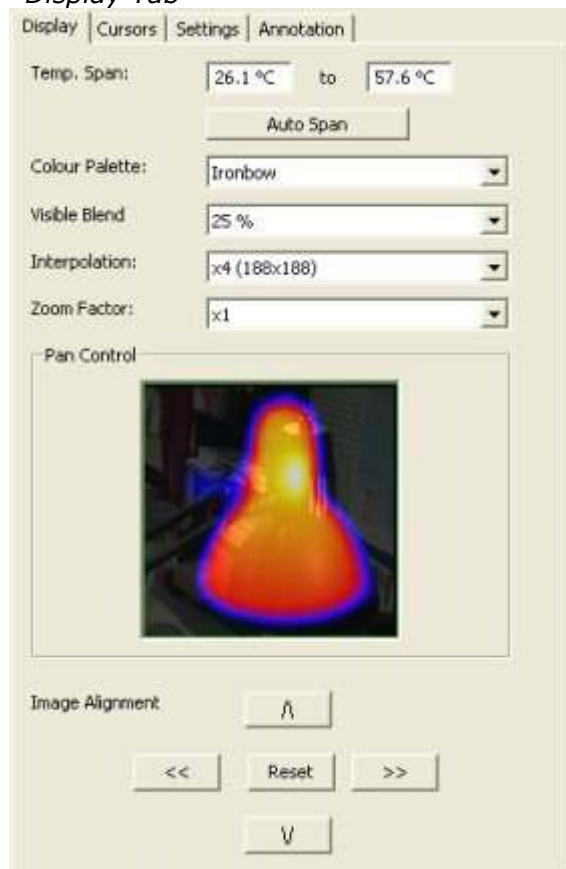


3. Tabs



### TABS

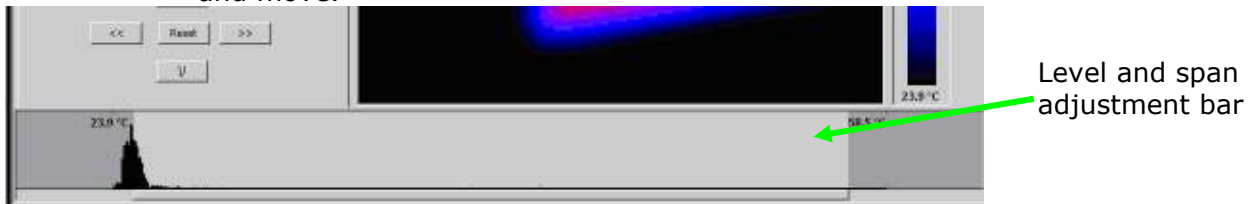
#### Display Tab



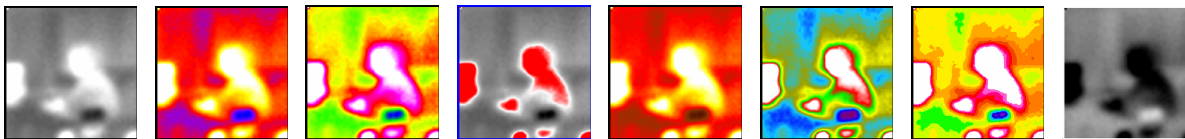
- 1 Visible span allows the span values to be altered manually by clicking on the Figures in the boxes and changing them. Auto span sets the visible span values based on the temperature values in the image.



The visible span can also be adjusted using a mouse in the level and span adjustment bar. (See below). To adjust the span, click on the dark grey and light grey border and drag. To adjust the level, click in the middle of the light grey area and move.



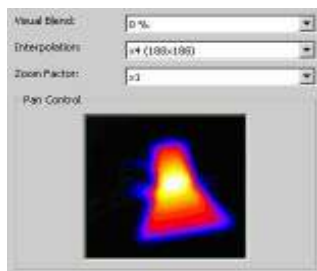
- 2 Colour palette. To change the colour palette, click on the arrow button.



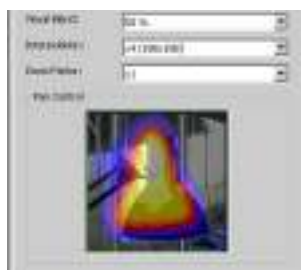
- 1
- 2
- 3
- 4
- 5
- 6
- 7
- 8

- |                   |                    |
|-------------------|--------------------|
| 1. White Hot Mono | 5. Hot Metal       |
| 2. Ironbow        | 6. High Contrast   |
| 3. Rainbow        | 7. 16 Step Rainbow |
| 4. Isotherm Style | 8. Black Hot Mono  |

- 3 Visible Blend. To change the visible/infrared ratio click on the arrow button.



100% Thermal

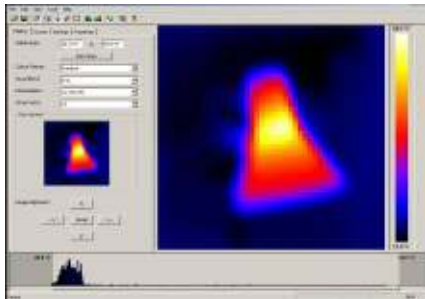


50% Thermal 50% Visible

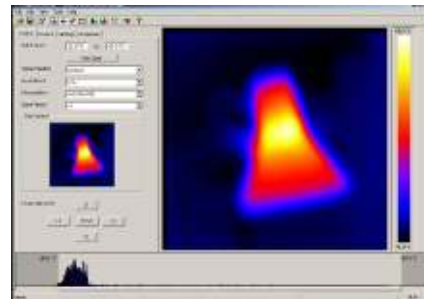


100% Visible

- 4 Interpolation. To change the interpolation, click on the arrow button. Lower values of interpolation give a more pixelated display. The following settings are available.  
x1 (47 x 47) (see below).                      x2 (94 x 94).  
x4 (188 x 188).and                              x8 (378 x 378) (see below)

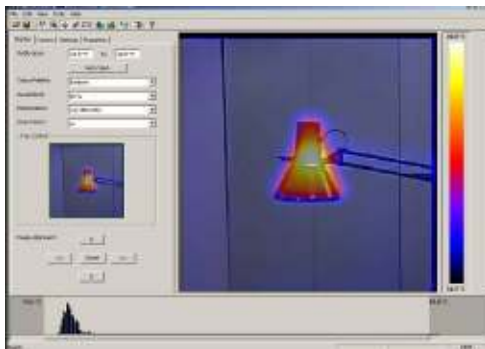


x1 (47 x 47)

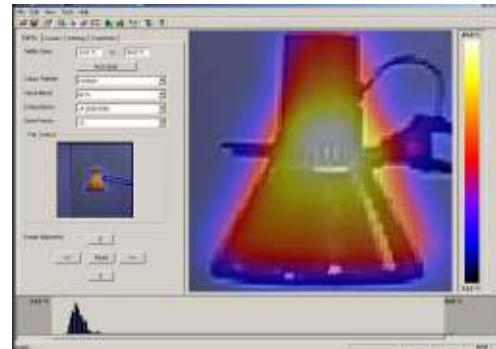


x8 (378 x 378)

- 5 Zoom factor. To change the zoom setting, click on the arrow button. The following four settings are available x1, x2, x3, x4 (examples of x1 and x3 shown below).

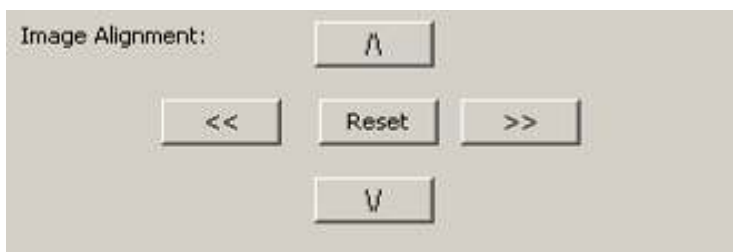


x1 Zoom



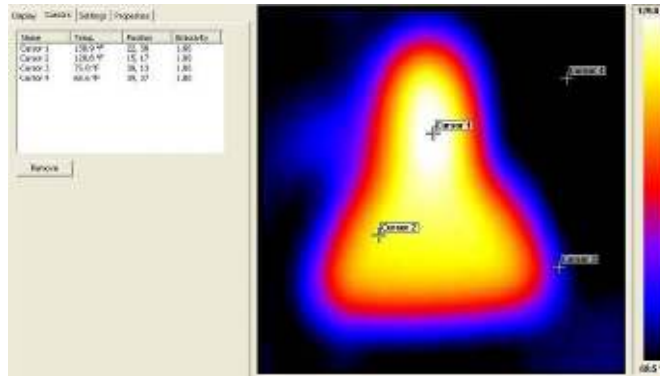
x3 Zoom

- 6 Image alignment. This allows the vertical and horizontal alignment of the thermal and visible images. Clicking on the navigation arrows will move the visible image while the infrared image remains stationary. It is easiest to adjust with a 50% thermal and 50% visible image.



**Note: Clicking on the reset button returns the alignment to the setting when the file was opened.**

*Cursors tab*



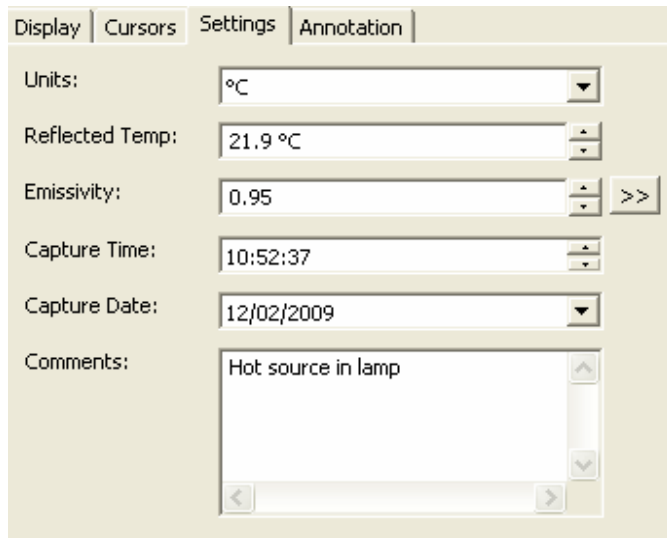
Up to 10 cursors can be added to the display.

1. To add a cursor to the image, double click on the image on the screen.
2. To remove cursors highlight the cursor in the box and click remove.

The list of cursors within the box shows: -

1. The temperature of the cursors.
2. The position of those cursors.
3. The emissivity value (applies to all pixels).

---

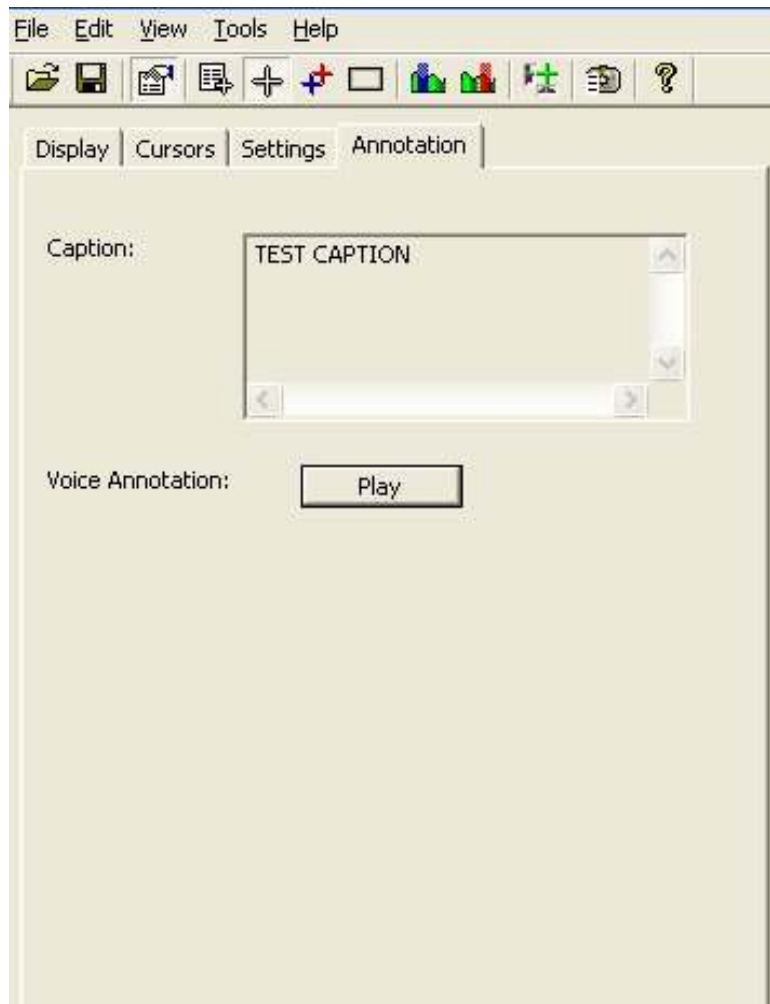
*Settings tab*

1. Units: °C, °F, K. Change using the arrow button.
2. Reflected Temp: Change using the arrow buttons.
3. Emissivity: 0.05 to 1.00. Change using the arrow buttons.
4. Capture Time: Change if required using the arrow buttons.
5. Capture Date: Change if required using the arrow buttons.
6. Comments: Type in any comments in the box.

*Properties tab*

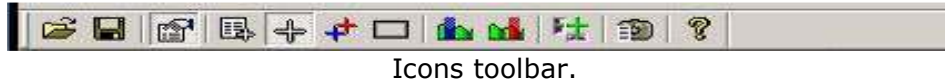
Shows the properties of the image and allows playing of the voice annotation associated with the image.

If a text caption is entered when saving the image it is shown here.

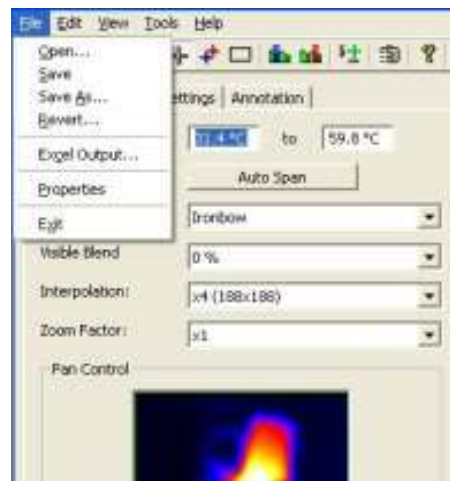


### 3.4. Menus and Toolbars

Use either the drop down menus or the icons on the toolbar to carry out various operations.

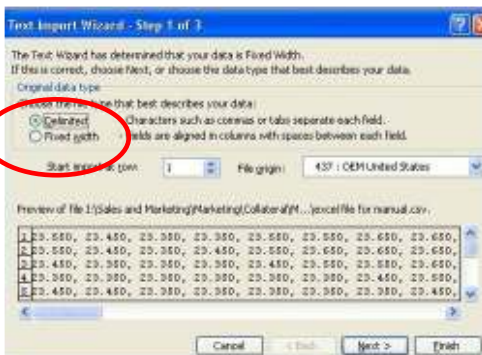


#### File



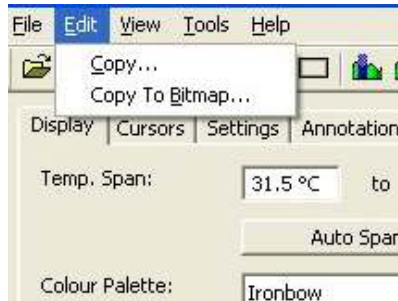
Items 1 and 2 below are also available via the icons on the toolbar.

1. Open. Use Windows Explorer to open an image.
2. Save. To save changes to the image.
3. Save As. To save the image with a different file name.
4. Revert. To discard all changes since the last save.
5. Excel output. Selecting this provides the temperature values of all pixels in a CSV format allowing it to be saved as a file. This can then be read as an Excel spreadsheet. Note that the file must be opened from within the Excel application (not by "double-clicking" on the file) and selecting comma delimiters.

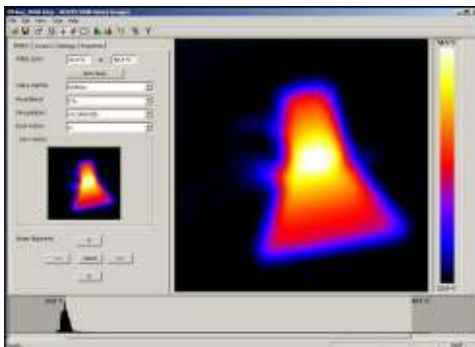


**Edit**

1. Copy...
2. Copy To Bitmap...

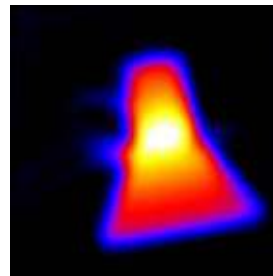


This offers the option to copy the image to the clipboard or to save as a bitmap. Both of these options will allow three choices - Full Window, Snapshot or Snapshot+.



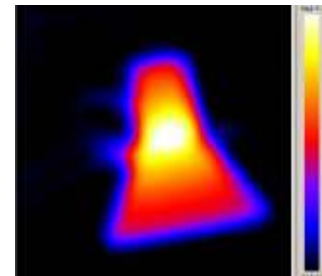
**Full window.**

Full window saves the complete window.



**Snapshot.**

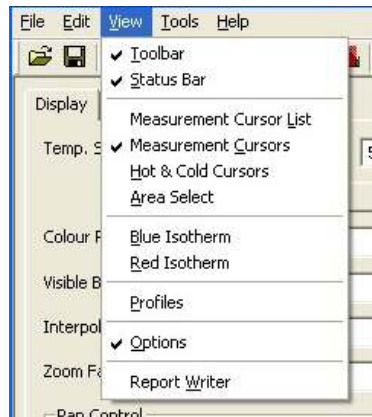
Snapshot saves the image only.



**Snapshot +.**

Snapshot + saves the image and the colour temperature scale.

**View**

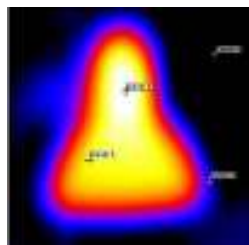


Items 3 to 9 and 11 below are also available via the icons on the toolbar.

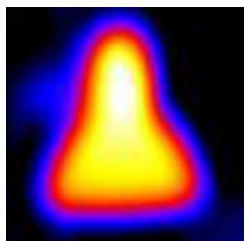
1. **Toolbar.** Turns on/off the icon toolbar.
2. **Status Bar.** Turns on/off the status bar at the bottom of the screen.
3. **Measurement Cursor List.** Toggles to show the temperature value and position of the selected cursors. The value of the hottest and coldest points in the image (see item 5 below) and the area box values (item 6 below).

| Measurement Cursors |         |          |
|---------------------|---------|----------|
| ID                  | Temp.   | Position |
| Cursor 1            | 29.5 °C | (23,23)  |
| Cursor 2            | 29.5 °C | (21,34)  |
| Cursor 3            | 29.9 °C | (38,31)  |
| Cursor 4            | 30.2 °C | (32,31)  |
| Cursor 5            | 29.5 °C | (35,24)  |
| Cursor 6            | 29.2 °C | (18,5)   |
| Cursor 7            | 0.0 °C  | (0,0)    |
| Cursor 8            | 0.0 °C  | (0,0)    |
| Cursor 9            | 0.0 °C  | (0,0)    |
| Cursor 10           | 0.0 °C  | (0,0)    |
| <b>Temp Diff</b>    | 0.0 °C  | (C1-C2)  |
| Image Info          |         |          |
| <b>Hot</b>          | 30.2 °C | (30,31)  |
| <b>Cold</b>         | 29.1 °C | (16,5)   |
| <b>Temp Diff</b>    | 1.1 °C  | (H-C)    |
| <b>Average</b>      | 29.5 °C |          |
| Area Select         |         |          |
| <b>Max</b>          | 30.2 °C |          |
| <b>Min</b>          | 29.3 °C |          |
| <b>Average</b>      | 29.5 °C |          |

4. **Measurement Cursors.** Toggles between displaying or removing the cursor/s on the image

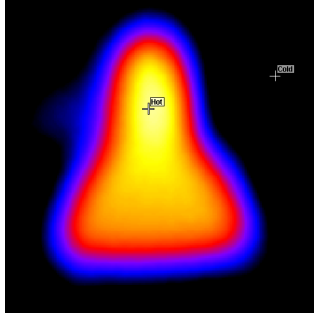


**Cursors**

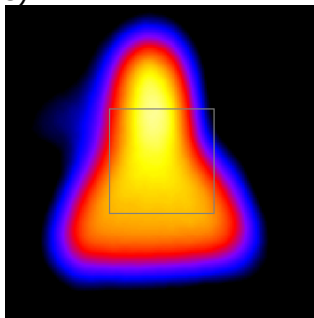


**No Cursors**

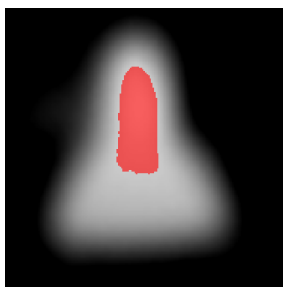
5. Hot & Cold Cursors. Toggles between displaying the hottest and coldest point of the whole image.



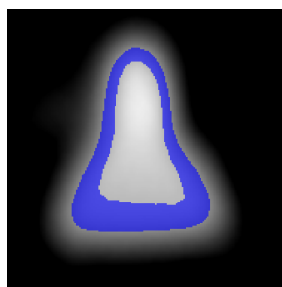
6. Area Select. Selects an area in the middle of the image. The maximum, minimum and average temperatures of the area box are displayed in the cursor list (item 3 above).



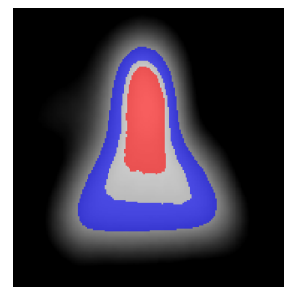
7. Blue Isotherm.  
8. Red Isotherm.  
Isotherms are regions within the scene of the same temperature range and are shown in the same colour. This is best seen using either the white hot or black hot colour schemes.



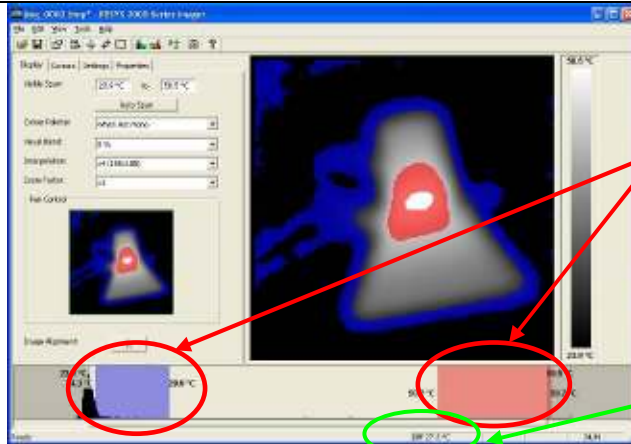
**Red Isotherm**



**Blue isotherm**



**Both Isotherms**



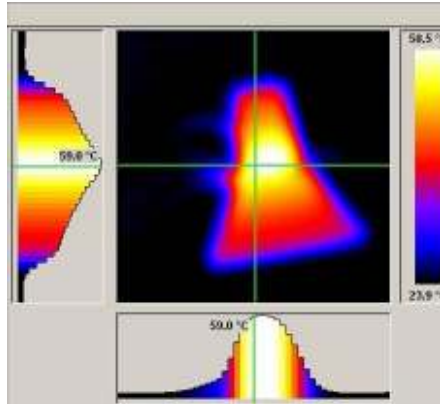
The red and blue isotherms can be set by adjusting the red and blue blocks in the level and span adjustment bar. This can be done using a mouse.

To adjust the isotherm width, click on the colour block edge and drag.

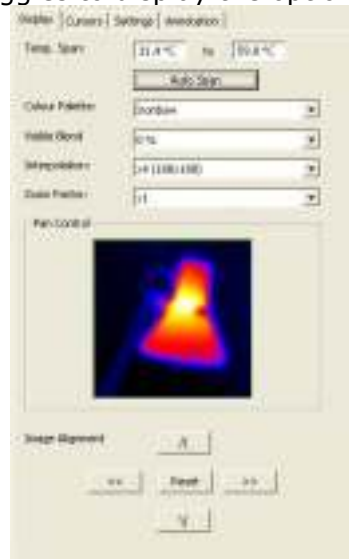
To adjust level, click in the colour block and move.

The temperature difference between the centre of the two isotherms is displayed at the bottom.

9. Profiles. A temperature profile is a histogram showing the temperature values through a cross-section of the scene. The profiles are displayed as shown below. The user can move the cross-section lines.



10. Options. Toggles to display the options panel.

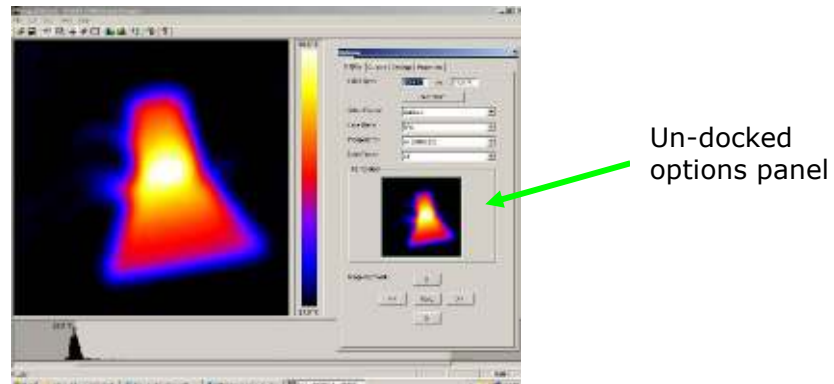


11. Report Writer. This will toggle between PC software and Report Writer software.

## Tools

1. Reset Isotherms. Reset the isotherms to the default values.
2. Dock options. Unselecting this allows the options panel to be moved around. When "Docked" it is locked into position on the left hand side of the screen.

**Note: Un-docking allows the whole of the options panel to be displayed when the main window is smaller.**



3. Language. The following languages can be selected.  
English, German, French, Spanish, Italian, Chinese, Japanese, Korean, US English and Portuguese

Once a language is selected exit the ThermalVision™ software and re-start it to activate the selection.



## Help

1. About. Shows the software version.



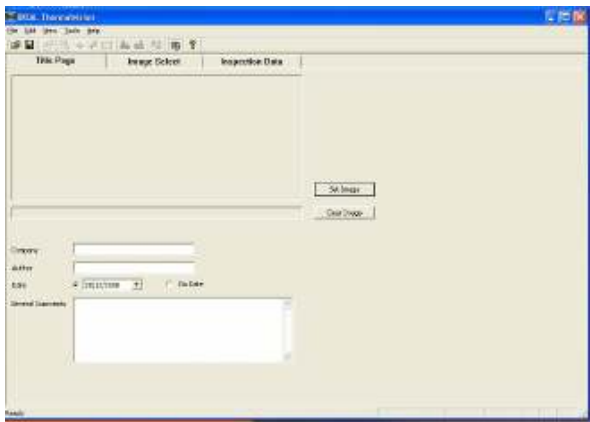
## 4. Report Writer

It is possible to toggle between the ThermalVision analysis software and the Report Writer software from the drop down view menu or the toolbar.

There are three steps to create a report. There is a separate tab for each function.

1. Title page. Enter details that should appear in the title page of the report.
2. Image select. This allows the selection of the images needed for the report.
3. Inspection Data. Information and additional data about each image can be added and then the report can be generated.

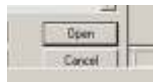
### 4.1. Title Page tab



1. When the Report Writer software is opened the title page appears as shown above. There is an empty space where a logo or other image can be placed to appear on the front page of the final report.
2. Press the set image button.



3. Windows Explorer can now be used to find an image.
4. Click on the open button to select and place an image or logo in the title page.

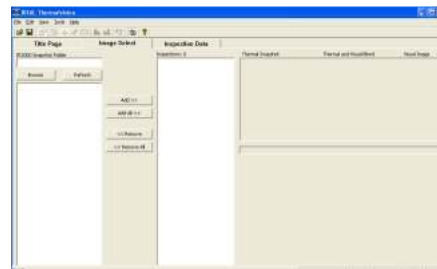


Enter the rest of the details required for the front page of the report.

## 4.2. Image Select tab.



1. The screen shown below appears.



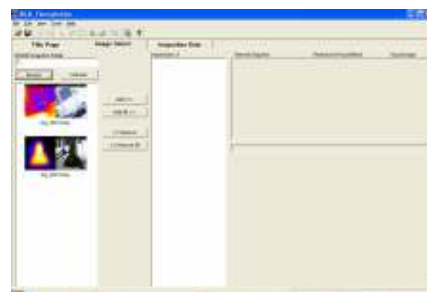
2. Click on the browse button to open Windows Explorer.



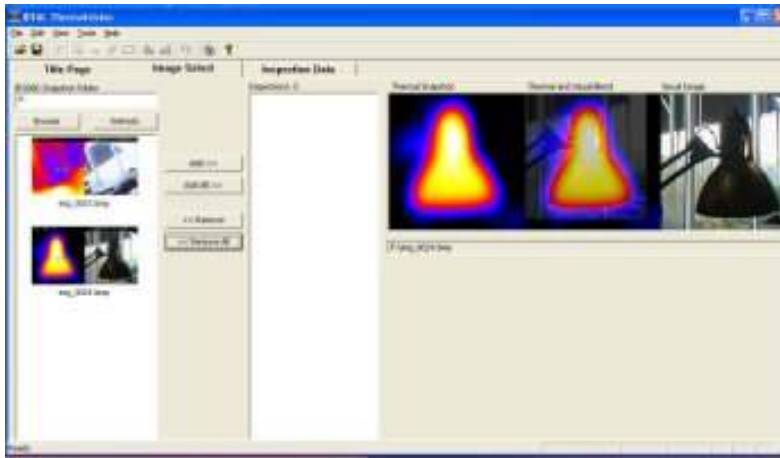
3. Highlight an image and click on the open button.



4. All the Images in that folder will now appear in the browser selection on the left of the window.



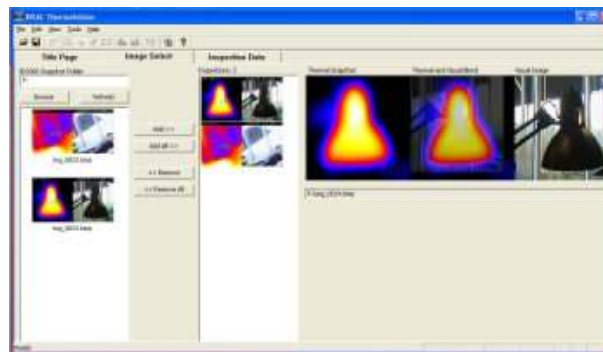
- Click on a selected image in the browser section and it appears in the image preview section on the right of the window.



- The add/add all remove/remove all buttons allow the selection and removal of images as required.



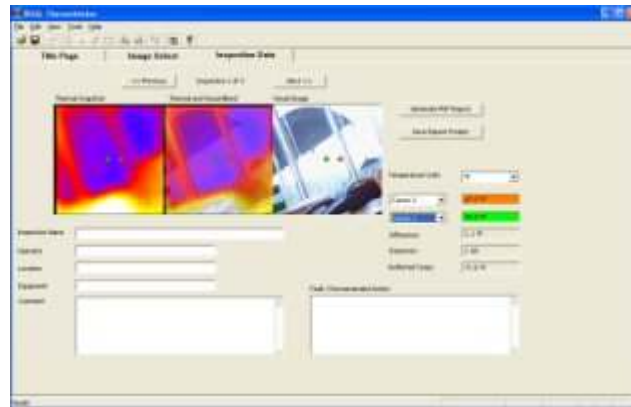
- Selected Image/s will appear in the inspection section in the centre of the window.



### 4.3. Inspection Data tab.



1. The inspection window will appear.



1. Complete and enter data as required for the report.  
**Tip - Before generating the report it is advisable to save the report project as this can then be changed later.**
2. Once data is entered press the Generate PDF Report button.  
**Tip - If the generate report button is not visible extend the window to full screen.**



3. A report is now generated and can be saved where required.



#61-844EUSW

---

**Warranty Statement:**

Any implied warranties arising out of the sale of an IDEAL product, including but not limited to warranties of merchantability and fitness for a particular purpose, are limited to the above. The manufacturer shall not be liable for loss or damage to computer equipment, peripheral equipment or other incidental or consequential damages, expenses, or economic loss, or for any claim or claims for such damage, expenses or economic loss.

Country laws vary, so the above limitations or exclusions may not apply to you. This warranty gives you specific legal rights, and you may also have other rights which vary from country to country.

IDEAL INDUSTRIES (U.K.) LTD.  
Unit 3, Europa Court Europa Boulevard  
Westbrook, Warrington, WA5 7TN Cheshire, UK  
Tel.: +44 (0)1925 44 44 46  
Fax: +44 (0)1925 44 55 01

[IDEAL\\_UK@idealindustries.com](mailto:IDEAL_UK@idealindustries.com)

[www.idealindustries.co.uk](http://www.idealindustries.co.uk)

[www.idealindustries.fr](http://www.idealindustries.fr)

IDEAL INDUSTRIES GMBH  
Gutenbergstraße 10  
D – 85737 Ismaning, Germany  
Tel.: +49 (0)89 99 868 0  
Fax: +49 (0)89 99 686 111

[IDEAL\\_GERMANY@idealindustries.com](mailto:IDEAL_GERMANY@idealindustries.com)

[www.idealindustries.de](http://www.idealindustries.de)

[www.europe.idealindustries.de](http://www.europe.idealindustries.de)